

SENSORS

for Digital Control Systems



Speed Sensors



Temperature Sensors



Pressure Sensors

- ✓ Reliable, high-precision sensing
- ✓ Wide range of measuring applications
- ✓ Designed to suit HEINZMANN products

- ✓ Strong, compact design
- ✓ Long life cycle
- ✓ Maintenance-free

SENSORS

for digital control systems

HEINZMANN offers complete solutions for the monitoring and control of engines and turbines. This involves a complete range of high-quality sensors that are fully customisable and can be configured to match any product specification.

HEINZMANN sets very high standards for its sensors to ensure that they comply with the most stringent industrial standards and suit customers' needs even in the most severe environments. Some of our sensors are certified for use in special applications.

Continuous improvement and systematic product development form part of HEINZMANN's philosophy. Based on customers' needs, we keep working on developing new sensor types for use under even the most difficult conditions.

Further we offer our experience and expertise for developing new sensors in cooperation with customers. This is why our sensor range covers almost any application requirement.

APPLICATIONS

- ➔ **Gas, diesel & dual fuel engines**
- ➔ **Gas, steam & water turbines**
- ➔ **Generators**
- ➔ **Marine**
- ➔ **Rail**
- ➔ **On- and off-road vehicles**

SENSOR FEATURES

- ✓ **Reliable, high-precision sensing**
- ✓ **Wide range of measuring applications**
- ✓ **Designed for HEINZMANN products**
- ✓ **Strong, compact design**
- ✓ **Long life cycle**
- ✓ **Maintenance-free**

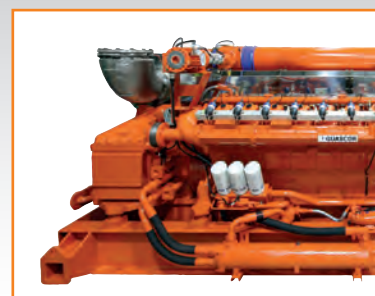
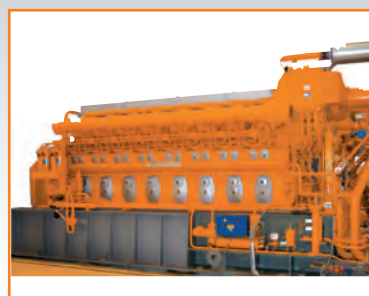
SENSOR TYPES

HEINZMANN sensors are classified by application and design and are available in the following types:

Temperature sensors

HEINZMANN high-quality temperature sensors based on PT100, PT200 or PT1000 measuring cells are used on all HEINZMANN systems and have become the industry bench mark for response times, long-term stability and measurement precision.

Our temperature sensors are suitable for measuring fluids and gases. They have IP65 protection rating. Measuring range of PT100/PT200 -40 °C up to +800 °C (short time +900 °C) and PT1000 -40 °C up to +150 °C.



Pressure sensors

HEINZMANN offers gas, boost and oil pressure sensors tailored to virtually any specification.

HEINZMANN pressure sensors are renowned for their accuracy and reliability and guarantee precision pressure sensing.

Sensors have an IP65 protection rating and are available for pressures ranging from 0 to 2.5, 4, 10, 16 and up to 2,000 bar.



Speed sensors

Inductive speed sensors

Inductive speed sensors are one of the most cost-effective methods for measuring speed.

These are contactless sensors and therefore free from wear. They can be customised to a wide range of requirements. Strongly built, the sensors are designed for intensive applications in severe environments.



HEINZMANN inductive speed sensors are available with metric or inch threading. Sensors have IP55 protection rating and are designed for frequencies from 50 to 12,000 Hz and air gap range 0.5 - 2.5 mm.



For use in PHLOX Ignition Systems HEINZMANN provides a camshaft position sensor with speed independent triggering and defined polarity of signal.

Hall-effect speed sensors

Hall-effect sensors are ideal for the contactless, wear-free measurement of speed. The advantage of Hall sensors in comparison with inductive speed sensors is that the output signal is not dependent on speed. Sensing is based on tooth position. Varying the tooth configuration makes it possible to tailor this sensor type to a wide variety of applications. Hall speed sensors are also less sensitive to external interference.

Inductive speed sensors are unsuitable for the control of injection systems. Hall-effect speed sensors, on the other hand, are ideal for electronic injection systems and electrically controlled gas valves.

Hall speed sensors have an IP65 protection class rating and operate at a switching frequency of 5 to 20,000 Hz and air gap range 0.5 - 2 mm.



For operation temperature and other technical details of the respective sensor please see *manual*.

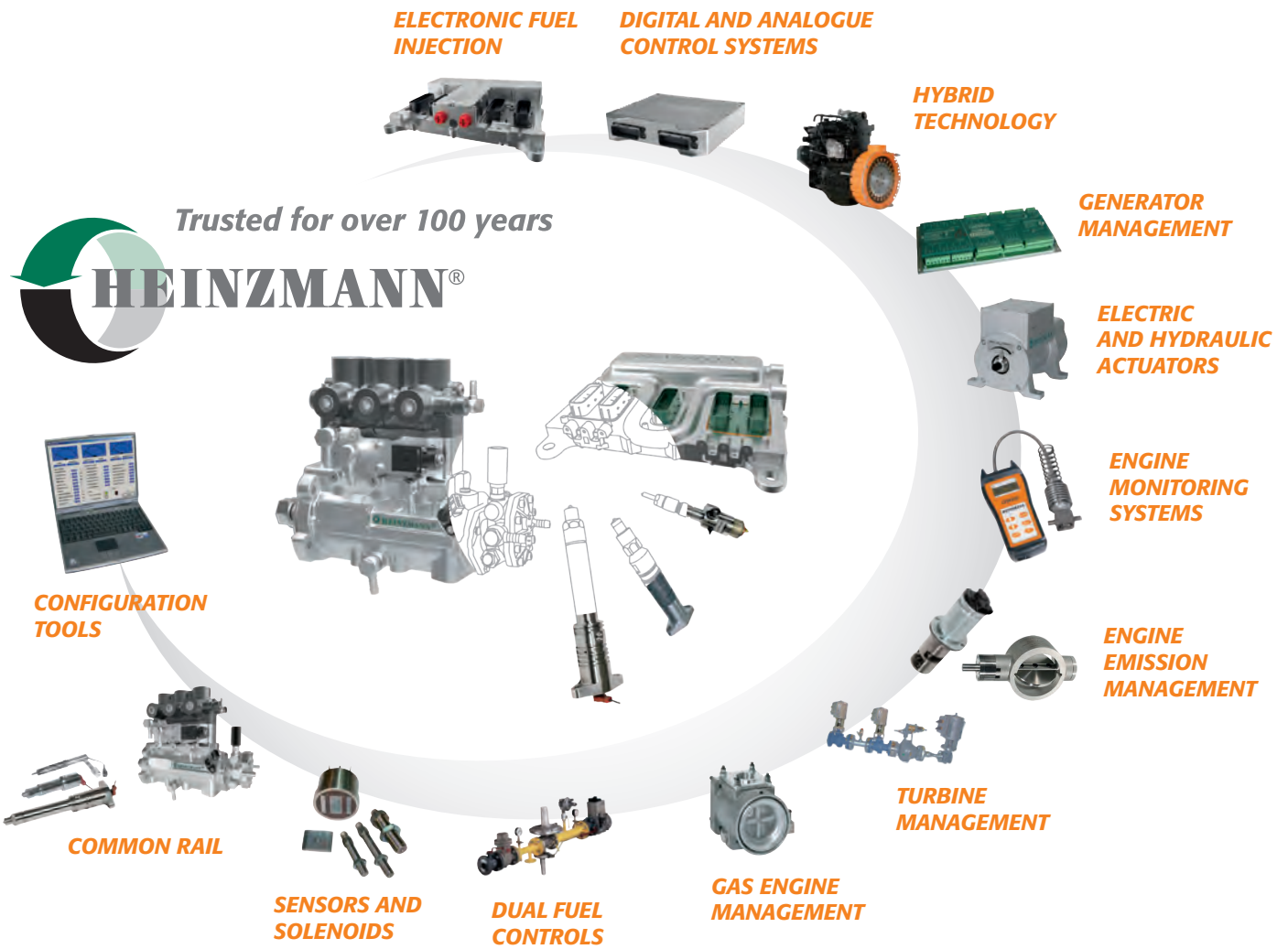




Head Office:

Heinzmann GmbH & Co. KG

Am Haselbach 1
 D-79677 Schönau/Germany
 Phone: +49 7673 8208 - 0
 Fax: +49 7673 8208 - 188
 Email: info@heinzmann.de



Quality & Precision since 1897



www.heinzmann.com